

# NAPOLEON

ASCENT™ DIRECT VENT GAS FIREPLACES



ASCENT™ DIRECT VENT GAS FIREPLACES  
[napoleonfireplaces.com](http://napoleonfireplaces.com)



# A Fireplace Series with ENDLESS OPPORTUNITIES.

## Fireplaces

Ascent™ 30.....	4 - 5
Ascent™ 35.....	6 - 7
Ascent™ 36.....	8 - 9
Ascent™ X 36.....	10 - 11
Ascent™ 42.....	12 - 13
Ascent™ X 42.....	14 - 15
Ascent™ 46.....	16 - 17
Ascent™ X 70.....	18 - 19
Ascent™ Multi-View.....	20 - 21
Ascent™ Linear 36.....	22 - 23
Ascent™ Linear 46.....	24 - 25
Ascent™ Series Media Kits.....	26
Napoleon's Outstanding Features.....	27 - 28
Detailed Specifications & Line Drawings.....	29 - 31



The Ascent™ 30 shown with the Heritage Safety Barrier and MIRRO-FLAME™ Porcelain Reflective Radiant Panels.



## FIND YOUR HAPPY (fire)PLACE.

Throughout the ages, people have gathered around fires to share in life's greatest joys.

There's just something about the glow of flickering flames that makes special moments feel even warmer.

A Napoleon fireplace is uniquely designed to brighten the vibe of any room in your house. Napoleon has an incredible range of designer options to fit any vision.

A fire not only raises the warmth and ambiance of a room, it can raise the value of your home. A fireplace offers some of the highest returns of any remodeling project. And that should make you feel good all over.

And so you can keep enjoying that positive glow for years and years and years to come, every Napoleon fireplace is backed by the President's Limited Lifetime Warranty.



Napoleon's Hot Spots Research Study delivers insights on key areas of the home. In particular, how to help you add relaxation, social interaction and functionality to rooms to enhance your memorable moments.

Throughout this brochure we will share some of our insights with you.

For more inspiration visit [napoleonfireplaces.com/inspiration](http://napoleonfireplaces.com/inspiration)



We are proud to be recognized as one of Canada's Best Managed Companies and are dedicated to providing quality, home comfort products for over 40 years and counting.

# Ascent™ 30

## Infinite Opportunities

Napoleon's Ascent™ Series has endless opportunities and is perfect for home builders and homeowners alike. The Ascent™ 30 is the smallest fireplace in the series and is the perfect option when space is at a premium. With up to 15,000 BTU's and Napoleon's exclusive PHAZER™ glowing log set, it provides plenty of cozy heat.

- B30
- Up to 15,000 BTU's
- Top or Rear Vent
- Flame/heat adjustment
- Viewing Area: 34 5/8" w x 30" h
- Natural gas or Propane

For more detailed specifications on this unit, see page 29.

## Options & Accessories



F45 & F60 Remote Controls  
On/off with digital screen



Heritage Decorative Safety Barrier



Zen Decorative Safety Barrier



Black 2" Trim Kit



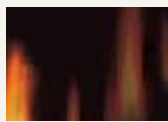
Black 3" Premium Bevelled Trim Kit







The Ascent™ 30 shown with Standard Safety Barrier and 2" Trim Kit and MIRRO-FLAME™ Porcelain Reflective Radiant Panels.



MIRRO-FLAME™  
Porcelain Reflective  
Radiant Panels



Mix-N-Match Alternate Media Enhancement Kits  
Shore Fire, Beach Fire and Mineral Rock Kit



# Ascent™ 35

## Boosts Ambiance

Napoleon's Ascent™ 35 enhances ambiance in any room with the industry's most realistic, exclusive PHAZER® log set and glowing ember bed. The clean face design of the Ascent™ 35 maximizes optimal viewing to ensure your new fireplace is enjoyed to the fullest. With various accessories and an advanced burner technology, the Ascent™ 35 is compact, stylish and robust!

B35

Up to 20,000 BTU's

Top Vent

Flame/heat adjustment

Viewing Area: 35" w x 34 5/8" h

Natural gas or Propane

For more detailed specifications on this unit, see page 29.

## Options & Accessories



F45 & F60 Remote Controls  
On/off with digital screen



Matte Black Clean Face Surround  
shown with Sandstone Brick Panels



Heritage Decorative Safety Barrier  
shown with MIRRO-FLAME™  
Porcelain Reflective Radiant Panels



Wrought Iron Surround shown with  
MIRRO-FLAME™ Porcelain Reflective  
Radiant Panels



Zen Decorative Safety Barrier shown  
with Sandstone Brick Panels



Black 2" Trim Kit shown with  
Sandstone Brick Panels

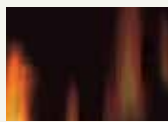


Black 3" Premium Bevelled Trim Kit  
shown with MIRRO-FLAME™ Porcelain  
Reflective Radiant Panels





The Ascent<sup>®</sup> 35 shown with Sandard Safety Barrier and Sandstone Decorative Brick Panels.



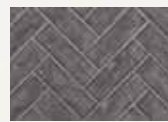
MIRRO-FLAME<sup>™</sup>  
Porcelain Reflective  
Radiant Panels



Sandstone Decorative  
Brick Panels



Westminster  
Standard Decorative  
Brick Panels



Westminster  
Herringbone Decorative  
Brick Panels



Old Town Red<sup>™</sup>  
Herringbone Decorative  
Brick Panels

# Ascent™ 36

## Enhanced Design

Napoleon's Ascent™ 36 is so versatile it can be installed almost anywhere! The shallow depth, at less than 16", allows for installations where space is limited. The clean face design maximizes the viewing area so your new pride and joy is thoroughly enjoyed.

- B36
- Up to 18,000 BTU's
- Top or Rear Vent
- Flame/heat adjustment
- Viewing Area: 35" w x 34 5/8" h
- Natural gas or Propane

For more detailed specifications on this unit, see page 29.

## Options & Accessories



F45 & F60 Remote Controls  
On/off with digital screen



Matte Black Clean Face Surround  
shown with MIRRO-FLAME™ Porcelain  
Reflective Radiant Panels



Heritage Decorative Safety Barrier  
shown with MIRRO-FLAME™  
Porcelain Reflective Radiant Panels



Wrought Iron Surround shown with  
MIRRO-FLAME™ Porcelain Reflective  
Radiant Panels



Zen Decorative Safety Barrier shown  
with MIRRO-FLAME™ Porcelain Reflective  
Radiant Panels



Black 2" Trim Kit shown with MIRRO-FLAME™  
Porcelain Reflective Radiant Panels



Black 3" Premium Bevelled Trim Kit  
shown with MIRRO-FLAME™ Porcelain  
Reflective Radiant Panels







The Ascent™ 36 shown with Standard Safety Barrier, Shore Fire and Beach Fire Media Kits and MIRRO-FLAME™ Porcelain Reflective Radiant Panels.



MIRRO-FLAME™  
Porcelain Reflective  
Radiant Panels



Mix-N-Match Alternate Media Enhancement Kits  
Shore Fire, Beach Fire and Mineral Rock Kit



# Ascent™ X 36

## A Multitude of Designer Options

Napoleon's Ascent™ X 36 allows you to transform any space into an inviting and relaxing retreat! With a multitude of designer options you can match existing decor or create an eye catching focal point. The Ascent™ X 36 boasts the industries most realistic, exclusive PHAZER® log set and glowing ember bed.

GX36

Up to 26,000 BTU's

Top or Rear Vent

Ceramic Glass

Flame/heat adjustment

Viewing Area: 35" w x 34 5/8" h

Natural gas or Propane

For more detailed specifications on this unit, see page 29.



## Options & Accessories



F45 & F60 Remote Controls  
On/off with digital screen



Optional eFIRE Remote App with  
Proflame II System Available



Matte Black Clean Face Surround  
shown with Old Town Red™  
Herringbone Brick Panels



Scalloped Wrought Iron Surround  
shown with Newport™ Decorative  
Brick Panels



Wrought Iron Surround shown with  
Westminster Herringbone Brick Panels



Zen Decorative Safety Barrier shown  
with MIRRO-FLAME™ Porcelain  
Reflective Radiant Panels



Black 2" Trim Kit shown with  
Sandstone Brick Panels

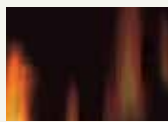


Black 3" Premium Bevelled Trim Kit  
shown with Newport™ Decorative  
Brick Panels





The Ascent™ X 36 shown with Premium Safety Barrier and MIRRO-FLAME™ Porcelain Reflective Radiant Panels.



MIRRO-FLAME™  
Porcelain Reflective  
Radiant Panels



Sandstone Decorative  
Brick Panels



Newport™ Decorative  
Brick Panels



Westminster  
Standard Decorative  
Brick Panels



Westminster  
Herringbone Decorative  
Brick Panels



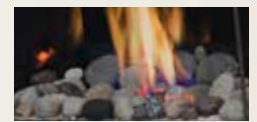
Old Town Red™  
Standard Decorative  
Brick Panels



Old Town Red™  
Herringbone Decorative  
Brick Panels



Mix-N-Match Alternate Media Enhancement Kits  
Shore Fire, Beach Fire and Mineral Rock Kit





# Ascent™ 42

## Limitless Décor Options

The Napoleon Ascent™ 42 Gas Fireplace offers a multitude of options with decorative safety barriers, surrounds, trims, decorative brick panels and MIRRO-FLAME™ Porcelain Reflective Radiant Panels. The Ascent™ 42 can be designed to your personal taste and can match any home décor. An approved safety barrier is included on the Ascent™ series, meeting current safety standards.

B42

Up to 22,000 BTU's

Top or Rear Vent

Flame/heat adjustment

Viewing Area: 42" w x 34 5/8" h

Natural gas or Propane

For more detailed specifications on this unit, see page 30.



Napoleon's Hot Spots Research Study revealed how desire for a fireplace, when shown in a master bedroom, increases by **75%**.

## Options & Accessories



F45 & F60 Remote Controls  
On/off with digital screen



Wrought Iron Surround shown with MIRRO-FLAME™ Porcelain Reflective Radiant Panels



Decorative Heritage Safety Barrier shown with Sandstone Brick Panels



Decorative Zen Safety Barrier shown with MIRRO-FLAME™ Porcelain Reflective Radiant Panels



Black 3" Premium Bevelled Trim Kit shown with Sandstone Brick Panels



Standard Safety Barrier shown with MIRRO-FLAME™ Porcelain Reflective Radiant Panels







The Ascent™ 42 shown with Standard Safety Barrier and MIRRO-FLAME™ Porcelain Reflective Radiant Panels.



MIRRO-FLAME™  
Porcelain Reflective  
Radiant Panels



Sandstone Decorative  
Brick Panels



Westminster  
Standard Decorative  
Brick Panels



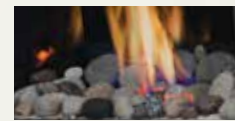
Westminster  
Herringbone Decorative  
Brick Panels



Old Town Red™  
Herringbone Decorative  
Brick Panels



Mix-N-Match Alternate Media Enhancement Kits  
Shore Fire, Beach Fire and Mineral Rock Kit



# Ascent™ X 42

## Optimal Design and Heating Capabilities

The Ascent™ X 42 meets the demand for a true 42-inch direct vent gas fireplace. Perfect for builders and homeowners alike, this 42" head burner boasts a premium split oak log set, the most realistic in the industry. The Ascent™ X 42 allows you to easily transform an everyday room into a gathering space worthy of your most critical company and life's most enjoyable moments.

GX42

Up to 30,000 BTU's

Top or Rear Vent

Flame/heat adjustment

Viewing Area: 34 7/8" w x 20 15/16" h

Natural gas or Propane

For more detailed specifications on this unit, see page 30.



### Options & Accessories



F45 & F60 Remote Controls  
On/off with digital screen



Optional eFIRE Remote App with  
Proflame II System Available



Standard Safety Barrier shown with 2" Trim Kit  
and MIRRO-FLAME™ Reflective Radiant Panels



Decorative Heritage Safety Barrier shown  
with Old Town Red™ Herringbone Brick Panels



Standard Safety Barrier shown with 3"  
Bevelled Trim Kit and Sandstone Brick  
Panels



Decorative Zen Safety Barrier shown with  
Westminster Herringbone Brick Panels



Standard Safety Barrier shown with  
Westminster Brick Panels

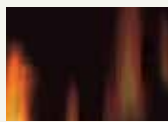


Wrought Iron Surround shown with Newport™  
Brick Panels





The Ascent™ X 42 shown with Heritage Safety Barrier and Newport™ Decorative Brick Panels..



MIRRO-FLAME™  
Porcelain Reflective  
Radiant Panels



Sandstone Decorative  
Brick Panels



Newport™ Decorative  
Brick Panels



Westminster  
Standard Decorative  
Brick Panels



Westminster  
Herringbone Decorative  
Brick Panels



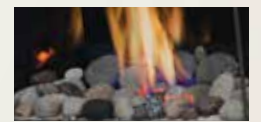
Old Town Red™  
Standard Decorative  
Brick Panels



Old Town Red™  
Herringbone Decorative  
Brick Panels



Mix-N-Match Alternate Media Enhancement Kits  
Shore Fire, Beach Fire and Mineral Rock Kit





# Ascent™ 46

## Unlimited Capabilities

Napoleon's Ascent™ 46 is now the largest single view fireplace in the Ascent™ Series and is offered as a 4" x 7" top and rear vent model. Offering a multitude of options with decorative safety barriers, surrounds, trim Kits, decorative brick panels and MIRRO-FLAME™ Porcelain Reflective Radiant Panels, the Ascent™ 46 can be designed to your personal taste and match any home décor.

B46

Up to 22,000 BTU's

Top or Rear Vent

Flame/heat adjustment

Viewing Area: 46" w x 34 5/8" h

Natural gas or Propane

For more detailed specifications on this unit, see page 30.

## Options & Accessories



F45 & F60 Remote Controls  
On/off with digital screen



Decorative Heritage Safety Barrier shown with  
MIRRO-FLAME™ Porcelain Reflective Radiant Panels



Decorative Zen Safety Barrier shown with  
Sandstone Brick Panels



Black 3" Premium Bevelled Trim Kit shown with  
MIRRO-FLAME™ Porcelain Reflective Radiant Panels







The Ascent™ 46 shown with Standard Safety Barrier and MIRRO-FLAME™ Porcelain Reflective Radiant Panels.



MIRRO-FLAME™  
Porcelain Reflective  
Radiant Panels



Sandstone Decorative  
Brick Panels



Westminster  
Standard Decorative  
Brick Panels



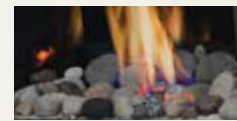
Westminster  
Herringbone Decorative  
Brick Panels



Old Town Red™  
Herringbone Decorative  
Brick Panels



Mix-N-Match Alternate Media Enhancement Kits  
Shore Fire, Beach Fire and Mineral Rock Kit



# Ascent™ X 70

## Impressive Fire

The Ascent™ X 70 gas fireplace offers you a wide range of heat output and control with a remarkable flame/heat adjustment. The Ascent™ X 70 boasts one of the most impressively solid towering flames that produce a remarkable presence that can not be ignored. With a large viewing area, a realistic PHAZER™ log set that is rich in color and detail and Napoleon's exclusive NIGHT LIGHT™, the Ascent™ X 70 is a one of a kind fireplace that you will be proud to have friends and family gather around.

GX70

Up to 35,000 BTU's

Top Vent

Flame/heat adjustment

Viewing Area: 35" w x 34 5/8" h

Natural gas or Propane

For more detailed specifications on this unit, see page 30.



## Options & Accessories



Modulating Remote Control with Digital Screen Comes Complete with Ascent™ X 70



Optional eFIRE Remote App with Proflame II System Available



Heritage Decorative Safety Barrier shown with Old Town Red Decorative Brick Panels



Black Surround with Operable Screen shown with Herringbone Decorative Brick Panels



Zen Decorative Safety Barrier shown with MIRRO-FLAME™ Porcelain Reflective Radiant Panels



Scalloped Wrought Iron Decorative Surround shown with Newport™ Decorative Brick Panels



Black 2" Trim Kit shown with Old Town Red Decorative Brick Panels



2" Trim Kit shown with MIRRO-FLAME™ Porcelain Reflective Radiant Panels



Matte Black Clean Face Surround shown with Newport™ Decorative Brick Panels



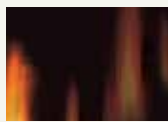
Wrought Iron Surround shown with Old Town Red Decorative Brick Panels







Ascent™ X 70 shown with Matte Black Surround with Operable Screen and Newport™ Brick Panels.



MIRRO-FLAME™  
Porcelain Reflective  
Radiant Panels



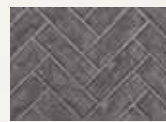
Sandstone Decorative  
Brick Panels



Newport™ Decorative  
Brick Panels



Westminster  
Standard Decorative  
Brick Panels



Westminster  
Herringbone Decorative  
Brick Panels



Old Town Red™  
Standard Decorative  
Brick Panels



Old Town Red™  
Herringbone Decorative  
Brick Panels

# Ascent™ Multi-View

## Infinite Viewing Opportunities

Napoleon's Ascent™ Multi-View Gas Fireplace is available as a See Thru or a three-sided Peninsula and features various firebox/burner options including a log burner, a linear glass burner or a designer fire cradle featuring topaz glass to match any room in your home. The new Ascent™ Multi-View Gas Fireplace offers up to 30,000 BTU's, a massive 2,023 sq. in. viewing area for the See Thru model and 2,484 sq. in. for the Peninsula model, multiple firebox configurations and electronic ignition with battery back-up. Media Kits and decorative panels are available to match any room in your home.

BHD4ST - See Thru

Up to 30,000 BTU's

45° Vent

Flame/heat adjustment

Viewing Area: 45" w x 38 1/4" h

Natural Gas or Propane

BHD4P - Peninsula

Up to 30,000 BTU's

45° Vent

Flame/heat adjustment

Viewing Area: 43 1/4" w x 38 1/4" h

Natural Gas or Propane

For more detailed specifications on this unit, see page 31.



Napoleon's Hot Spots Research Study divulges how over **90%** of people surveyed strongly desire a fireplace in the family / living room.

### Options & Accessories



Designer Fire Art  
Metal Coil Design



Designer Fire Art  
Nickel Stix Design



F45 & F60 Remote Controls  
On/off with digital screen



Modulating Remote Control  
with Digital Screen



Ascent™ Multi-View Peninsula with PHAZER™ Log Set Burner (BHD4PN) shown with MIRRO-FLAME™ Porcelain Reflective Radiant Panels



Ascent™ Multi-View See Thru with Fire Cradle Media Burner (BHD4STFCN) shown with MIRRO-FLAME™ Porcelain Reflective Radiant Panels



Ascent™ Multi-View See Thru with Topaz CRYSTALLINE™ glass ember bed Burner (BHD4STGN) shown with MIRRO-FLAME™ Porcelain Reflective Radiant Panels







Ascent™ Multi-View shown with Topaz CRYSTALLINE™ glass ember bed and MIRRO-FLAME™ Porcelain Panels.



Ascent™ Multi-View shown with PHAZER™ log set burner and Newport™ Decorative Brick Panels.



Newport™ Decorative Brick Panels  
Available only with Log Set Burner



MIRRO-FLAME™ Porcelain Reflective Radiant Panels



Alternate Glass Media Kits & Glass Enhancement Kits  
Six Colors Available



Mineral Rock Kit Available

# Ascent™ Linear 36

Boasts Beauty and Performance

The Napoleon Ascent™ Linear 36 Gas Fireplace is perfect for homeowners, re-modellers and custom builders. With a multitude of designer options, the Ascent™ Linear 36 can be dressed to match an existing room decor or can be stylized to be a focal point in your room. The Ascent™ Linear 36 comes standard with an exclusive Topaz CRYSTALINE™ ember bed that can be changed out to a completely new look with the Shore Fire, Beach Fire and Mineral Rock Kits which include a variety of rocks, sand, logs and vermiculite.

BL36-1

Up to 17,500 BTU's

Top Vent

Flame/heat adjustment

Viewing Area: 18 13/16" h x 31 9/16" w

Natural Gas or Propane

For more detailed specifications on this unit, see page 31.



## Options & Accessories



F45 & F60 Remote Controls  
On/off with digital screen



Optional eFIRE Remote App  
with Proflame II System



CRYSTALINE™ Ember Bed



Optional Blower



Ascent™ Linear 36 shown with Standard Safety Barrier and MIRRO-FLAME™ Porcelain Reflective Radiant Panels with Shore Fire Media Kit



Ascent™ Linear 36 shown with Stainless Steel Surround and MIRRO-FLAME™ Porcelain Reflective Radiant Panels with Blue Glass Embers



Ascent™ Linear 36 shown with Classic Black Surround and MIRRO-FLAME™ Porcelain Reflective Radiant Panels with Beach and Shore Fire Media Kits combined







Ascent™ Linear 36 shown with Stainless Steel Surround, Shore and Beach Fire Kit, and MIRRO-FLAME™ Porcelain Reflective Radiant Panels.



MIRRO-FLAME™  
Porcelain Reflective  
Radiant Panels



Alternate Glass Media Kits & Glass Enhancement Kits  
Six Colors



Mineral Rock Kit



Shore Fire Kit



Beach Fire Kit



# Ascent™ Linear 46

## Radiant Heat and Flame Innovation

With multiple designer options, Napoleon's Ascent™ Linear 46 Gas Fireplace is ideal for making a dramatic statement in your home. A Topaz CRYSTALINE™ ember bed is included with the Ascent™ Linear 46 and adds shimmer wherever it's installed. Customize the look by using the optional Beach Fire, Shore Fire, or Mineral Rock enhancement Kits, and you can even mix and match Kits to enhance your personal style. Use the optional eFIRE app and your favorite mobile device to control this fireplace with ease from the comfort of your chair. Perfect for homeowners, remodelers and even builders who wish to add something special to a space.

BL46

Up to 24,000 BTU's

Top Vent

Flame/heat adjustment

Viewing Area: 18 13/16" h x 42 1/2" w

Natural Gas or Propane

For more detailed specifications on this unit, see page 31.



### Options & Accessories



F45 & F60 Remote Controls  
On/off with digital screen



Optional eFIRE Remote App  
with Proflame II System



CRYSTALINE™ Ember Bed



Optional Blower



Ascent™ Linear 46 shown with Standard Safety Barrier and MIRRO-FLAME™ Porcelain Reflective Radiant Panels with Beach and Shore Fire Media Kits combined



Ascent™ Linear 46 shown Stainless Steel Surround and MIRRO-FLAME™ Porcelain Reflective Radiant Panels with Clear Glass Beads



Ascent™ Linear 46 shown with Classic Black Surround and Mineral Rock Media Kit





The Ascent™ Linear 46 shown with Standard Safety Barrier, Shore and Beach Fire Kit, and MIRRO-FLAME™ Porcelain Reflective Radiant Panels.



MIRRO-FLAME™  
Porcelain Reflective  
Radiant Panels



Alternate Glass Media Kits & Glass Enhancement Kits  
Six Colors



Mineral Rock Kit



Shore Fire Kit



Beach Fire Kit



# Enhance Your Ember Bed

Napoleon Fireplaces offers an entire line-up of completely customizable, media enhancement kits. The three kits are; the Beach Fire Kit that consists of 4 driftwood logs, a Shore Fire Kit that consists of rock, sand, vermiculite and glass and a Mineral Rock Kit that consists of rocks in a variety of shapes, sizes and colors. These kits can be used as stand alone media or you can pick and choose elements from all 3 Kits to be mix & matched to create a custom look. Completely customize your fireplace to your desired style.



## Beach Fire Kit

Comes with four driftwood logs

The Beach Fire Kit includes four pieces of driftwood styled logs.



## Shore Fire Kit

Comes with a variety of Rock, Sand, Vermiculite and Glass

The Shore Fire Kit includes a well balanced mixture of rocks, sand, vermiculite and glass available in various sizes.



## Mineral Rock Kit

Comes with rocks in a variety of shapes, sizes and colors

The Mineral Rock Kit is a mixture of different sized rocks in black, red, blue and grey.

Media Kits	Ascent Series Fireplaces										
	B30	B35	B36	GX36	B42	GX42	B46	BHD4	GX70	BL36-1	BL46
Shore Fire	SFKS	N / A	SFKS	SFKS	SFKM	SFKM	SFKM	N / A	N / A	SFKS	SFKM
Beach Fire	BFKXS	N / A	BFKXS	BFKXS	BFKS	BFKS	BFKS	N / A	N / A	BFKXS	BFKM
Mineral Rock	MRKS	N / A	MRKS	MRKS	MRKM	MRKM	MRKM	MRKM	N / A	MRKXS	MRKM

## Just some of the ways to mix and match your fireplace media...





# Features and Accessories

- Back-up control system ensures reliable use, even during power failures
- **CRYSTALINE™** glass ember bed or **PHAZER™** log set options available
- Optional **MIRRO-FLAME™** Porcelain Reflective Radiant Panels
- Optional brick Kits in Sandstone, Old Town Red, Newport™ or Herringbone
- Optional glass ember media Kits in black, blue, red, amber, clear and topaz to replace or add to the **CRYSTALLINE™** ember bed
- Electronic Ignition Including Hi/Lo Flame adjustment
- Divinity™ flame pattern provides heightened peaks and valleys (Ascent™ Linear Models)
- Choose from a variety of optional decorative safety barriers, surrounds and trims
- Optional Driftwood Log, Shore Fire, Beach Fire and Mineral Rock enhancement Kits available
- Optional **AMBIENT-GLOW** metal fibers are designed to enhance the glowing embers on gas fires
- **eFIRE** App allows you to customize your enjoyment with the convenience of your mobile device (optional for Ascent™ Linear Models)
- Optional blower Kits available (all models excluding BHD4)



# Outstanding Features

of Napoleon's Advanced Technology



## Advanced Burner Technology

Napoleon's sophisticated burner system offers superior flame technology. Strategically placed burner ports create the most realistic YELLOW DANCING FLAMES® in the industry.

## Finely Tuned Precision Valves

Surrounded with a protective cast aluminum jacket, the precision valves allow for ultimate reliability and 100% SAFE GUARD® gas control system.

## Minimum 30% savings on heating costs with Zone Heating



Zone Heating means you are heating the rooms that you use the most with an alternate heat source, like a Napoleon gas fireplace. Zone Heating is the obvious solution for families concerned about rising fuel costs.

## Outstanding Craftsmanship

Fine details are designed in every aspect of Napoleon fireplaces... individually handcrafted with pride of excellence to last a lifetime.

## Safety Screens

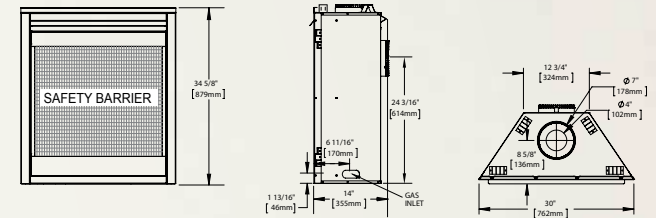
Napoleon, leaders in design & technology have developed safety screens with aesthetically pleasing designs for every gas appliance to ensure ultimate safety and peace of mind for your family.

# Dimensions & Specifications

## Ascent™ 30

Shown on pages 4 - 5

\*Surrounds may change unit dimensions

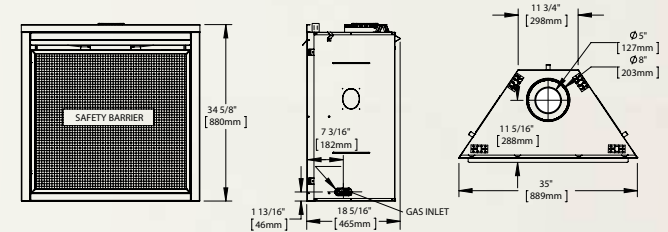


Model	BTU's (Input)		Venting 4" x 7"	Height		Front Width		Depth		Glass Type	Glass Size		Glass Area (sq. in.)	Efficiencies		Blower	Mobile Home Certified
	Natural Gas	Propane		Actual	Framing	Actual	Framing	Actual	Framing		Height	Width		EnerGuide	AFUE		
B30	15,000	15,000	Top / Rear	34 5/8"	35"	30"	30 1/2"	14"	14 1/2"	Tempered	23 11/16"	25 11/16"	609	68.9 %	72.5 %	Optional	Yes

## Ascent™ 35

Shown on pages 6 - 7

\*Surrounds may change unit dimensions

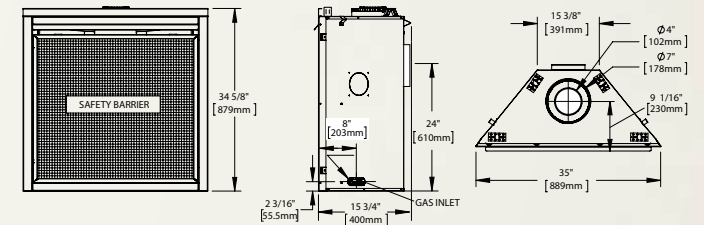


Model	BTU's (Input)		Venting 5" x 8"	Height		Front Width		Depth		Glass Type	Glass Size		Glass Area (sq. in.)	Efficiencies		Blower	Mobile Home Certified
	Natural Gas	Propane		Actual	Framing	Actual	Framing	Actual	Framing		Height	Width		EnerGuide	AFUE		
B35	20,000	20,000	Top	34 5/8"	35"	35"	35 1/2"	18 5/16"	18 9/16"	Tempered	23 11/16"	30 11/16"	727	56.4 %	63.5 %	Optional	Yes

## Ascent™ 36

Shown on pages 8 - 9

\*Surrounds may change unit dimensions

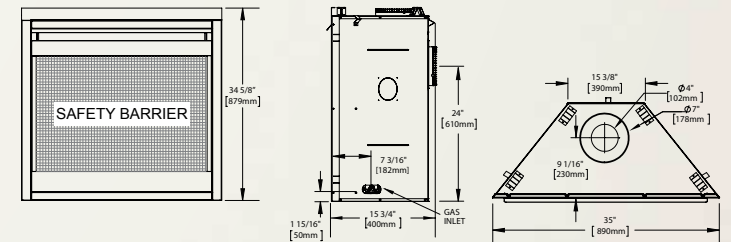


Model	BTU's (Input)		Venting 4" x 7"	Height		Front Width		Depth		Glass Type	Glass Size		Glass Area (sq. in.)	Efficiencies		Blower	Mobile Home Certified
	Natural Gas	Propane		Actual	Framing	Actual	Framing	Actual	Framing		Height	Width		EnerGuide	AFUE		
B36	18,000	15,000	Top / Rear	34 5/8"	35"	35"	35 1/2"	15 3/4"	16"	Tempered	23 11/16"	30 11/16"	727	75.4 %	76.3 %	Optional	Yes

## Ascent™ X 36

Shown on pages 10 - 11

\*Surrounds may change unit dimensions



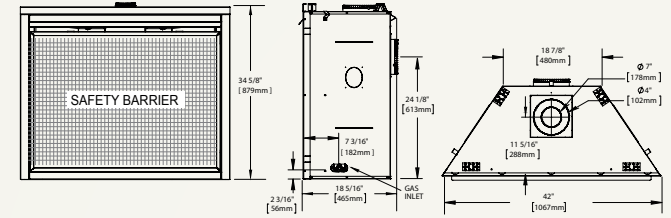
Model	BTU's (Input)		Venting 4" x 7"	Height		Front Width		Depth		Glass Type	Glass Size		Glass Area (sq. in.)	Efficiencies		Blower	Mobile Home Certified
	Natural Gas	Propane		Actual	Framing	Actual	Framing	Actual	Framing		Height	Width		EnerGuide	AFUE		
GX36	26,000	26,000	Top / Rear	34 5/8"	35"	35"	35 1/2"	15 3/4"	16"	Ceramic	23 11/16"	30 11/16"	727	70.1 %	73.8 %	Optional	Yes



## Ascent™ 42

Shown on pages 12 - 13

\*Surrounds may change unit dimensions

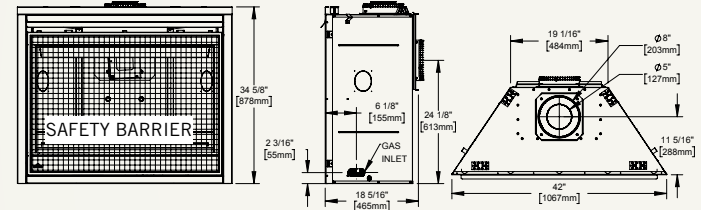


Model	BTU's (Input)		Venting 4" x 7"	Height		Front Width		Depth		Glass Type	Glass Size		Glass Area (sq. in.)	Efficiencies		Blower	Mobile Home Certified
	Natural Gas	Propane		Actual	Framing	Actual	Framing	Actual	Framing		Height	Width		EnerGuide	AFUE		
B42	22,000	22,000	Top / Rear	34 5/8"	35"	42"	42 1/2"	18 5/16"	18 9/16"	Tempered	23 11/16"	37 11/16"	893	73.3%	N/A	Optional	Yes

## Ascent™ X 42

Shown on pages 14 - 15

\*Surrounds may change unit dimensions

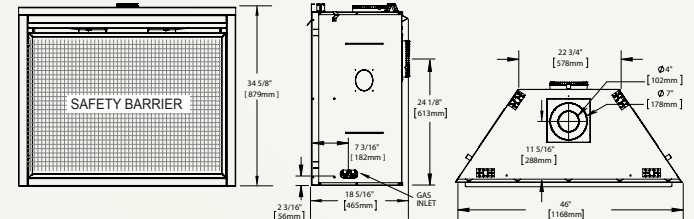


Model	BTU's (Input)		Venting 5" x 8"	Height		Front Width		Depth		Glass Type	Glass Size		Glass Area (sq. in.)	Efficiencies		Blower	Mobile Home Certified
	Natural Gas	Propane		Actual	Framing	Actual	Framing	Actual	Framing		Height	Width		EnerGuide	AFUE		
GX42	30,000	30,000	Top / Rear	40 7/8"	41 1/8"	42"	42 1/2"	18 5/16"	18 9/16"	Ceramic	23 11/16"	37 11/16"	893	51.3%	N/A	Optional	Yes

## Ascent™ 46

Shown on pages 16- 17

\*Surrounds may change unit dimensions

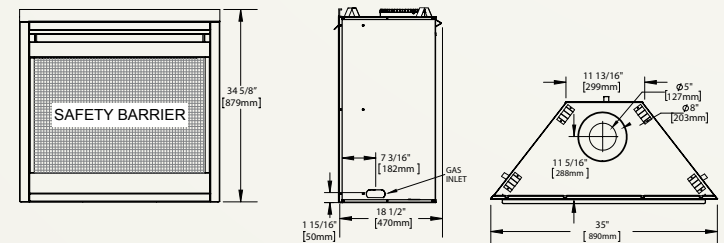


Model	BTU's (Input)		Venting 4" x 7"	Height		Front Width		Depth		Glass Type	Glass Size		Glass Area (sq. in.)	Efficiencies		Blower	Mobile Home Certified
	Natural Gas	Propane		Actual	Framing	Actual	Framing	Actual	Framing		Height	Width		EnerGuide	AFUE		
B46	22,000	22,000	Top / Rear	34 5/8"	35"	46"	46 1/2"	18 5/16"	18 9/16"	Tempered	23 11/16"	41 11/16"	988	73.3%	N/A	Optional	Yes

## Ascent™ X 70

Shown on pages 18 - 19

\*Surrounds may change unit dimensions

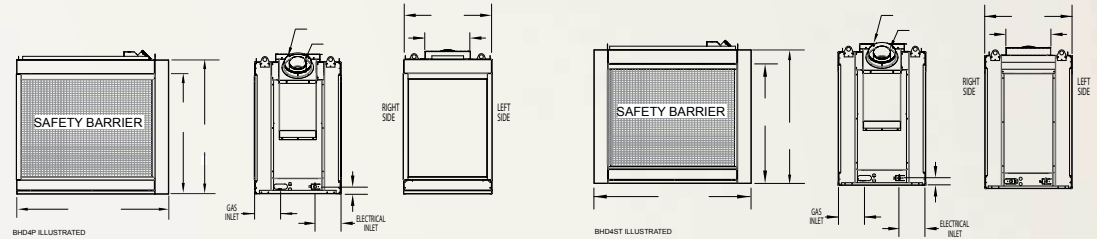


Model	BTU's (Input)		Venting 5" x 8"	Height		Front Width		Depth		Glass Type	Glass Size		Glass Area (sq. in.)	Efficiencies		Blower	Mobile Home Certified
	Natural Gas	Propane		Actual	Framing	Actual	Framing	Actual	Framing		Height	Width		EnerGuide	AFUE		
GX70	35,000	35,000	Top	34 5/8"	35"	35"	35 1/2"	18 1/2"	19"	Ceramic	23 11/16"	30 11/16"	727	75 %	N/A	Included	Yes

## Ascent™ Multi View

Shown on pages 20 - 21

\*Surrounds may change unit dimensions

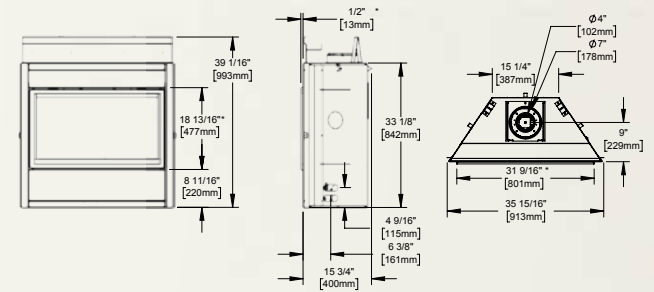


Model	BTU's (Input)		Venting 5" x 8"	Height		Front Width			Depth			Glass Type	Glass Size (Face)		Glass Size (End)		Glass Area (sq. in.)	Efficiencies		Blower	Mobile Home Certified
	Natural Gas	Propane		Actual	Framing	Actual	Min. Framing	Max. Framing	Actual	Min. Framing	Max. Framing		Height	Width	Height	Width		EnerGuide	AFUE		
BHD4ST	30,000	30,000	45°	38 1/4"	46 1/2"	45"	45 1/2"	45 1/2"	25 1/8"	22 5/8"	24 5/8"	Tempered	28 1/2"	35 1/2"	N/A	N/A	2024	67.9 %	66.98 %	N/A	Yes
BHD4P	30,000	30,000	45°	38 1/4"	46 1/2"	43 1/4"	42 1/2"	43 1/2"	25 1/8"	22 5/8"	24 5/8"	Tempered	28 1/2"	35 1/2"	27 1/8"	17"	2485	67.9 %	66.98 %	N/A	Yes

## Ascent™ Linear 36

Shown on pages 22 - 23

\*Surrounds may change unit dimensions



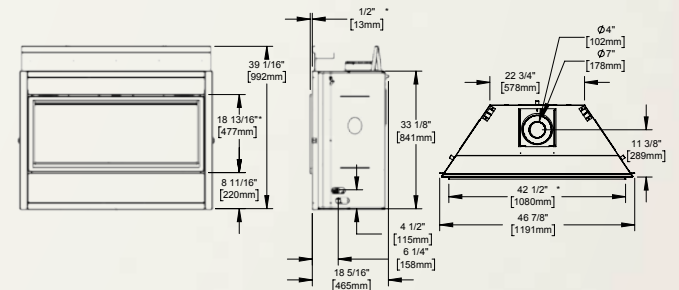
\*Finishing flange depth (The finishing flange defines the perimeter of the fireplace opening. Framing or finishing materials must NEVER encroach inside the finishing flange)

Model	BTU's (Input)	Venting 4" x 7"	Height		Front Width		Depth		Glass Type	Glass Size		Blower	Mobile Home Certified
			Actual	Framing	Actual	Framing	Actual	Framing		Height	Width		
BL36-1	17,500	Top	39 1/16"	39 1/16"	35 1/16"	35 1/16"	15 11/16"	15 11/16"	Tempered	16 3/4"	30 3/4"	Optional	Yes

## Ascent™ Linear 46

Shown on pages 24 - 25

\*Surrounds may change unit dimensions



\*Finishing flange depth (The finishing flange defines the perimeter of the fireplace opening. Framing or finishing materials must NEVER encroach inside the finishing flange)

Model	BTU's (Input)	Venting 4" x 7"	Height		Front Width		Depth		Glass Type	Glass Size		Blower	Mobile Home Certified
			Actual	Framing	Actual	Framing	Actual	Framing		Height	Width		
BL46	24,000	Top	39 1/16"	39 3/8"	46 7/8"	46 3/8"	18 5/16"	18 9/16"	Tempered	16 3/4"	41 11/16"	Optional	Yes

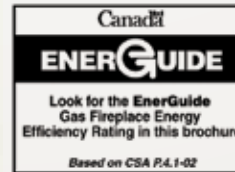


# NAPOLEON - CELEBRATING OVER 40 YEARS OF HOME COMFORT PRODUCTS



24 Napoleon Road, Barrie, Ontario, Canada L4M 0G8  
103 Miller Drive, Crittenden, Kentucky, USA 41030  
7200 Trans Canada Highway, Montreal, Quebec, Canada H4T 1A3

Tel: 1-866-820-8686  
napoleonfireplaces.com



Authorized Dealer

Consult your owner's manual for complete installation instructions and proper clearances to combustible materials. Check all local and national building codes and gas regulations. All specifications are subject to change without prior notice due to on-going product improvements. Products may not be exactly as shown. Flame height and activity is influenced by varying vent configurations and may not appear as shown. Napoleon is a registered trademark of Wolf Steel Group Inc. EnerGuide - A Canadian efficiency standard based on frequent, short start-up and cool-down cycles. All appliances sold in Canada are subject to this EnerGuide rating system. AFUE - A US efficiency standard (Department of Energy) based on extended on/off cycles, more typical of fireplace usage. Steady State - Reflects the highest possible overall heating efficiency.